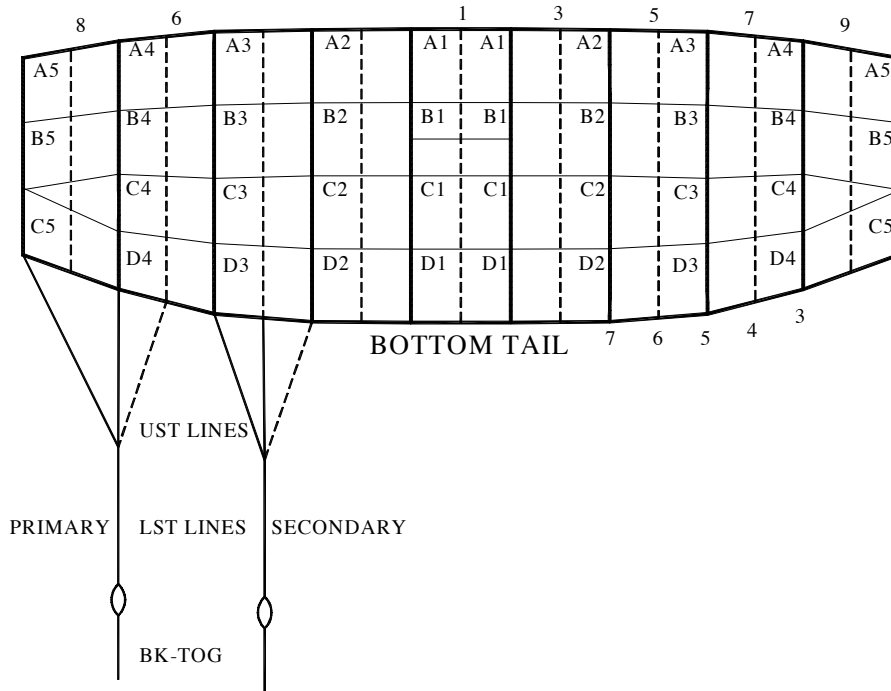




**LINE TRIM CHART**  
**FOR**

**SIGMA 340 - 395**



	SG II - 340	SG-340	SG II - 370	SG-370	SG-395
	Vectran	Dacron	Vectran	Dacron	Dacron
A1	193 7/8	193 7/8	202 1/4	202 1/4	209
A1-B1	3 5/8	3 5/8	3 7/8	3 7/8	4
A1-C1	13 1/8	13 1/8	13 3/4	13 3/4	14 1/4
A1-D1	24 3/4	24 3/4	25 7/8	25 7/8	26 3/4
A2	193 7/8	193 7/8	202 1/4	202 1/4	209
A2-B2	3 5/8	3 5/8	3 7/8	3 7/8	4
A2-C2	13 1/8	13 1/8	13 3/4	13 3/4	14 1/8
A2-D2	24 5/8	24 5/8	25 3/4	25 3/4	26 5/8
A3	194	194	202 3/8	202 3/8	209 1/8
A3-B3	3 5/8	3 5/8	3 3/4	3 3/4	4
A3-C3	12 7/8	12 7/8	13 1/2	13 1/2	13 7/8
A3-D3	23	23	24 1/8	24 1/8	25
A4	194	194	202 3/8	202 3/8	209 1/8
A4-B4	3 7/8	3 7/8	4	4	4 1/8
A4-C4	11 5/8	11 5/8	12 1/8	12 1/8	12 1/2
A4-D4	20 1/8	20 1/8	21 1/8	21 1/8	21 7/8
A5	194 1/4	194 1/4	202 5/8	202 5/8	209 3/8
A5-B5	4 3/8	4 3/8	4 5/8	4 5/8	4 3/4
A5-C5	12 1/8	12 1/8	12 3/4	12 3/4	13 1/8
LST-P	131 1/2	131 1/2	137	137	141 1/2
A5-UST1	8 1/4	8 1/4	8 1/2	8 1/2	8 3/4
A5-UST3	8 3/4	8 3/4	9	9	9 1/4
A5-UST4	13 5/8	13 5/8	14	14	14 1/2
LST-S	154 3/4	136 3/4	161 1/8	142 1/2	147 1/4
A5-UST5	32 1/4	13 1/8	33 1/4	13 1/2	14
A5-UST6	33 5/8	14 1/2	34 5/8	15	15 3/8
A5-UST7	38 2/4	19 3/8	39 3/4	20 1/8	20 3/4
B STAB SLK	1	1	1	1	1
C STAB SLK	1 1/2	1 1/2	1 1/2	1 1/2	1 1/2
BK-TOG-P*	22 1/4	22 1/4	23	23 1/2	24 3/8
BK-TOG-S*	N/A	18 1/4	N/A	19 3/8	20
Dome Slider w/ 4 Grommets	19 1/2" Chord	19 1/2" Chord	19 1/2" Chord	19 1/2" Chord	19 1/2" Chord
	54" Span	54" Span	54" Span	54" Span	54" Span
	2 channels		2 channels		

\*Due to development methodology, the finished BK-TOG dimensions may not scale